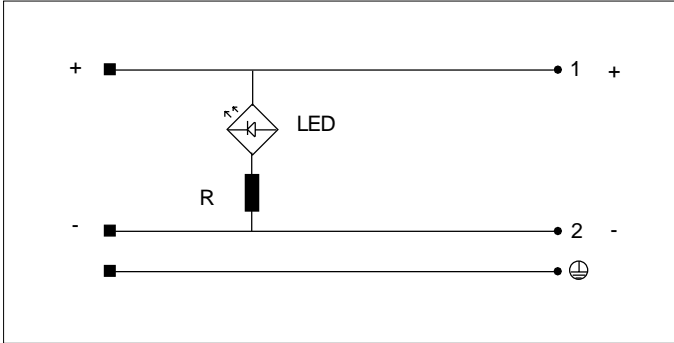


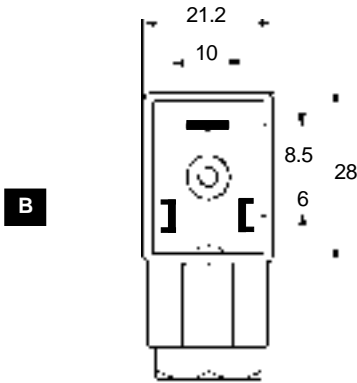
### DIN 43650 FORM B - DC LIGHTED - LOW HOUSING

#### CIRCUIT CONFIGURATION

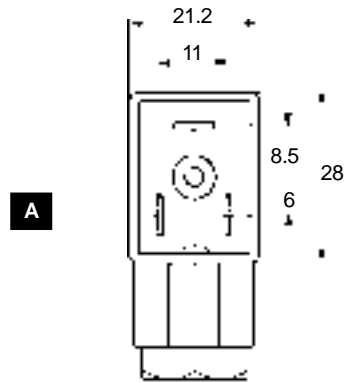


#### SPECIFICATIONS

Housing and Pinplate Material:	PA + 30% GF
Socket Contact Material:	CU ZN / Tin Plated
Housing Color:	Clear
Maximum Current:	8 Amps
Circuit:	L.E.D w/ Resistor
Pin Spacing:	10 & 11 m.m.
Protection Class:	IP 65 DIN 40 050
Insulation Class:	Group C - VDE 01110
Working Temperature:	- 40°C to +125°C



**M512Z**



**M513Z**

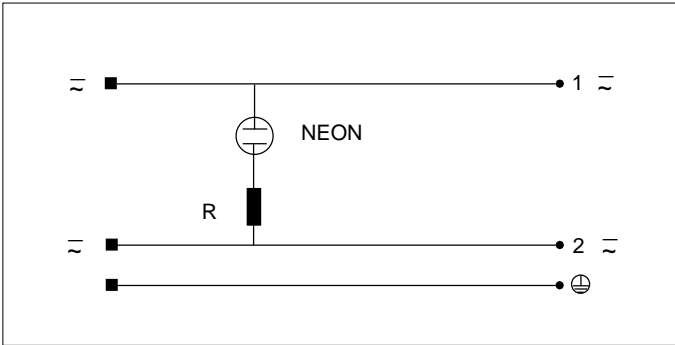
ORDER CODE	VOLTAGE	POLES	CABLE DIA.	CABLE GLAND	FIGURE
M513Z RC 29 1 313 0	12 vdc	2 + GRD	4.5 to 6 m.m.	Pg 9	A
M513Z RC 29 6 313 0	24 vdc	2 + GRD	4.5 to 6 m.m.	Pg 9	A
M513Z RC 29 9 313 0	48 vdc	2 + GRD	4.5 to 6 m.m.	Pg 9	A
M513Z RC 29 16 313 0	90 vdc	2 + GRD	4.5 to 6 m.m.	Pg 9	A
M512Z RC 211 1 313 0	12 vdc	2 + GRD	4.5 to 6 m.m.	Pg 9	B
M512Z RC 211 6 313 0	24 vdc	2 + GRD	4.5 to 6 m.m.	Pg 9	B
M512Z RC 211 9 313 0	48 vdc	2 + GRD	4.5 to 6 m.m.	Pg 9	B
M512Z RC 211 16 313 0	90 vdc	2 + GRD	4.5 to 6 m.m.	Pg 9	B

ALL CONNECTORS CAN BE PROVIDED PRE-WIRED AND/OR WITH SURGE SUPPRESSION

FOR IMMEDIATE ASSISTANCE CALL 800-966-2345

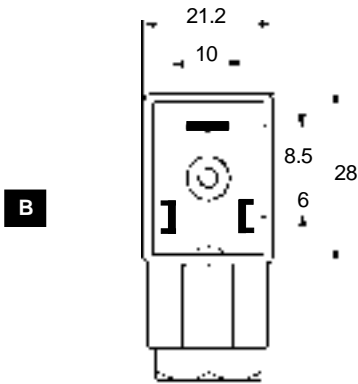
### DIN 43650 FORM B - AC LIGHTED - LOW HOUSING

#### CIRCUIT CONFIGURATION

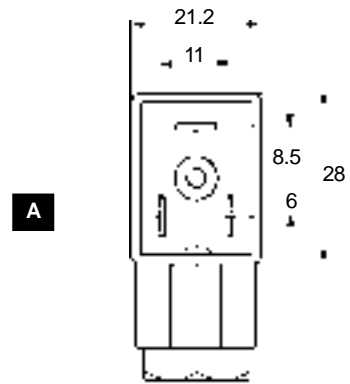


#### SPECIFICATIONS

Housing and Pinplate Material:	PA + 30% GF
Socket Contact Material:	CU ZN / Tin Plated
Housing Color:	Clear
Maximum Current:	8 Amps
Circuit:	NEON w/ Resistor
Pin Spacing:	10 & 11 m.m.
Protection Class:	IP 65 DIN 40 050
Insulation Class:	Group C - VDE 01110
Working Temperature:	- 40°C to +125°C



**M512Z**



**M513Z**

ORDER CODE	VOLTAGE	POLES	CABLE DIA.	CABLE GLAND	FIGURE
M513Z RC 29 14 313 0	24 vac	2 + GRD	4.5 to 6 m.m.	Pg 9	A
M513Z RC 29 4 313 0	110 - 120 vac	2 + GRD	4.5 to 6 m.m.	Pg 9	A
M513Z RC 29 8 313 0	215 - 230 vac	2 + GRD	4.5 to 6 m.m.	Pg 9	A
M512Z RC 211 14 313 0	24 vac	2 + GRD	4.5 to 6 m.m.	Pg 9	B
M512Z RC 211 4 313 0	110 - 120 vac	2 + GRD	4.5 to 6 m.m.	Pg 9	B
M512Z RC 211 8 313 0	215 - 230 vac	2 + GRD	4.5 to 6 m.m.	Pg 9	B

ALL CONNECTORS CAN BE PROVIDED PRE-WIRED AND/OR WITH SURGE SUPPRESSION

FOR IMMEDIATE ASSISTANCE CALL 800-966-2345